

The logo features the text 'QBRX' in a bold, white, sans-serif font. The letter 'Q' is stylized with a small tail that curves upwards and to the right, resembling a speech bubble. This logo is centered within a teal speech bubble shape that has a tail pointing towards the bottom right. The entire graphic is set against a white background, which is itself surrounded by a teal border.

**QBRX**

TALKING FACILITIES

---

DIGITAL ENERGY MANAGEMENT  
SMART BUILDINGS WITH IOT

# CONTENT

3

## ENERGY MANAGEMENT SYSTEMS

Think sustainable

5

## DIN EN ISO 50001

Focuses

7

## REASONS

... that speak in favor of the introduction of an energy management system

9

## IoT SERVICE DESK

Work smart

11

## EASY INTEGRATION & SIMPLE DATA HANDLING

One software. Multiple areas of application.

13

## WITH IoT YOU MAKE BUILDINGS AND PLANTS INTELLIGENT

solutions

15

## WHAT CAN QBRX DO?

Features

17

## KEEP EVERYTHING IN VIEW

Transparency creates efficiency

19

## ABOUT THE CREATION OF QBRX

It all started with an idea

21

## CONTACT

22

## IMPRESSUM

# ENERGY MANAGEMENT SYSTEMS





## *„It's not about short-term optimisation, Think sustainable.“*

An operational energy management system is the central instrument for systematically anchoring the reduction of energy consumption in the company in the long term. It sets the structural framework for continuously identifying and exploiting energy efficiency potential in the company. Whether peak compensation of energy and electricity tax or the special compensation scheme of the Renewable Energy Sources Act (EEG) - energy management systems can significantly reduce energy costs in companies. The methodology for determining the key figures is the responsibility of the company and must be plausible and comprehensible. A core element of energy management is energy controlling, which ensures

the systematic and continuous evaluation of regularly measured energy consumption and at the same time the monitoring of the set targets. Energy controlling enables energy consumption to be assigned to individual cost units and deviations from the defined key figures to be identified. In this way, the effectiveness of the measures developed can be checked again and again and new measures can be developed in order to continuously reduce energy consumption and energy costs.

The basis of energy management is the inventory and analysis of operational energy consumption in order to locate weak points and sources of loss and to identify potential savings. The data obtained is converted into so-called energy performance indicators and depicts the energy efficiency of the processes under consideration.

## DIN EN ISO 50001

*Systematically record energy consumption and make it more efficient:  
Since 2011, companies around the world have been using the standardised procedure of the ISO 50001 standard for this purpose. The main motivation for companies in this country is the reduction of energy costs and possible relief from energy taxes and energy surcharges.*

The revision of ISO 50001 in 2018 results in new requirements for the establishment and operation of a certified energy management system. A three-year transition period begins with the publication. After that, the existing certificates according to ISO 50001:2011 will lose their validity. The new 50001 adopts the "High-Level Structure" (HLS). ISO 50001:2018 is intended to facilitate the introduction of integrated management systems.

QBRX has been officially certified by GUTcert for the Federal Office of Economics and Export Control and supports the DIN EN ISO 50001 standard.

- **Adoption of the "High-Level Structure" (HLS):**  
Uniform terms, definitions and numbering of the standard chapters and thus high compatibility with other standards
- **Greater consideration of stakeholders:**  
Determination of the requirements of interested parties
- **Risk-based approach:**  
Addressing risks and opportunities in relation to the energy management system
- **Continuous improvement:**  
Recurring evidence of energy performance improvement
- **Emphasis on stronger management responsibility:**  
Stronger commitment to ensure the energy-related performance and effectiveness of the EnMS
- **Normalise energy performance indicators = EnPI and the associated energetic baselines = EnB:**  
Identify appropriate EnPIs that stand up to methodological scrutiny (this closes the circle to ISO 50006 and ISO 50015).

# Reasons





*.... for the introduction of an  
energy management system  
speak for:*

- ✓ Permanent reduction of energy costs
- ✓ More cost-efficient production
- ✓ Relief from electricity and energy tax
- ✓ Active contribution to the environment
- ✓ Ecologically and economically sustainable production
- ✓ Contribution to the energy transition
- ✓ Every € saved is your net profit
- ✓ Energy management is promoted by law
- ✓ Transparency

# ENERGY MANAGEMENT SYSTEM - YOUR IoT SERVICE DESK

## Work smart

QBRX is a cloud-based platform that combines solutions for energy management and technical facility management as well as a selection of building control technology functions in one software.

In the IoT Service Desk QBRX, all your processes, units, facilities and devices are networked, organised and coordinated. The cloud software is therefore everything in one: analysis, service and organisation tool. With QBRX, fast, efficient and customisable digitalisation is just a few steps away. Translated with [www.DeepL.com/Translator](http://www.DeepL.com/Translator) (free version)

As an IoT service desk, QBRX creates the link between data analysis, remote administration and workflow management and thus saves you superfluous interfaces.

*With our many years of experience, we provide you with comprehensive support and advice on optimal energy controlling, the introduction of your suitable QBRX management system and the optimisation of your energy efficiency.*



**QBRX** Facilities - 1 | **Vorführ AG**

Alle Facilities - Dashboard - Controlling - Dashboard 1 - Dashboard 2 - Vorgänge - Übersichten

Facilities Room: Vorführ AG

**ENERGIE**

- BWA - Energiekosten
- Immobilienvermietung
- Produktionsenergie
- Verkaufenergie

**REGULATIONSBEREICH**

- Baustellenkosten-Explosion-Center
- Quartalscontrolling 27% - AGCT Percentage Services

**AGCT - ANWENDUNGSPUNKT**

- EGZ Standort 1
- Montagepunkte 3 20000 Hermsdorf Germany
- EGZ Standort 2

**REGULATIONSBEREICH**

- Flächen-Center
- AGCT-Controlling-Flächen 30 30000 Eilat Germany
- Flächen-Landung
- Elektromotoren 30 70000 Suberlin Germany
- Kaufhaus-Suberlin

**Vorführ AG**

**Energetisierung Strom**

- Immobilienvermietung: 1% Immobilienvermietung
- Produktionsenergie: 47,5% Produktionsenergie
- Verkaufenergie: 51,5% Verkaufenergie

**Energetisierung Erdgas**

- Flächen-Center: 17,5% Flächen-Center
- Flächen-Eilat: 41% Flächen-Eilat
- Kaufhaus-Suberlin: 41,5% Kaufhaus-Suberlin

**Energetisierung Strom**

	2017	2018	2019	2020	2021	Summe
Immobilienvermietung	42.000,00	30.075,00	1.000,00	1.500.000,00	4.995.000,00	2.278.575,00
Produktionsenergie	0,00	0,00	0,00	1.200.000,00	200.740,00	1.400.740,00
Verkaufenergie	980.000,00	980.000,00	980.000,00	970.000,00	100.000,00	3.910.000,00
<b>Summe</b>	<b>1.022.000,00</b>	<b>1.290.075,00</b>	<b>1.980.000,00</b>	<b>2.771.500,00</b>	<b>5.195.740,00</b>	<b>10.579.255,00</b>

**Energetisierung Erdgas**

	2017	2018	2019
Produktionsenergie	0,00	0,00	0,00
Verkaufenergie	1.000.000,00	1.000.000,00	1.000.000,00
<b>Summe</b>	<b>1.000.000,00</b>	<b>1.000.000,00</b>	<b>1.000.000,00</b>

**Energetisierung Strom Gesamt**

	2017	2018	2019	2020	2021
Produktionsenergie	0,00	0,00	0,00	0,00	0,00
Verkaufenergie	980.000,00	980.000,00	980.000,00	970.000,00	100.000,00
<b>Summe</b>	<b>980.000,00</b>	<b>980.000,00</b>	<b>980.000,00</b>	<b>970.000,00</b>	<b>100.000,00</b>

**Q**

**QBRX**

TALKING FACILITIES

# SIMPLE INTEGRATION & SIMPLE DATA HANDLING

## One software. Diverse areas of application.

Put an end to individual systems for building control, facility management and energy management. QBRX combines everything on one platform and is a customised system for different user groups. Depending on what you are looking for and which approaches you are pursuing - we will support you.

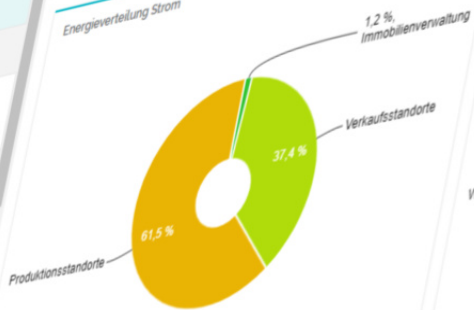
We have been working with a wide variety of client groups for many years and we know exactly what matters in practice.



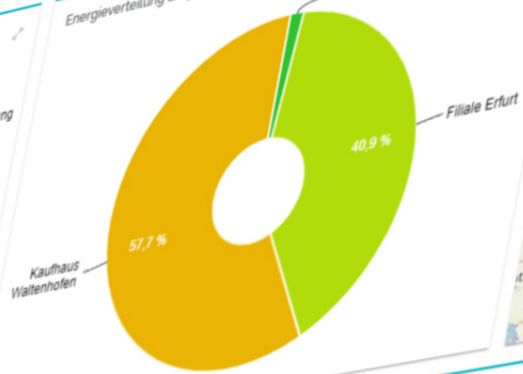


Vorführ AG

Energieverteilung Strom



Energieverteilung Erdgas



Energieverbrauch Strom	2016	2017	2018	2019	2020	Summe
Produktionsstandorte	0 kWh	42.03 kWh	19.273,68 kWh	19.274,69 kWh	18.475,57 kWh	57.065,96 kWh
Verkaufsstandorte	567.863,4 kWh	568.197,60 kWh	569.674,19 kWh	569.271,74 kWh	549.040,16 kWh	2.824.047,16 kWh
Immobilienverwaltung	0 kWh	0 kWh	0 kWh	0 kWh	1.131.629,35 kWh	1.131.629,35 kWh
<b>Summe</b>	<b>567.863,4 kWh</b>	<b>568.239,69 kWh</b>	<b>588.947,67 kWh</b>	<b>588.546,43 kWh</b>	<b>1.699.145,07 kWh</b>	

Energieverbrauch Erdgas	2016	2017	2018	2019
Produktionsstandorte	0 kWh	0 kWh	0 kWh	0 kWh
Verkaufsstandorte	1.040.147,11 kWh	1.040.817,45 kWh	1.034.849,01 kWh	1.036.096,99 kWh
<b>Summe</b>	<b>1.040.147,11 kWh</b>	<b>1.040.817,45 kWh</b>	<b>1.034.849,01 kWh</b>	<b>1.036.096,99 kWh</b>

Energiekosten Strom Gesamt

Jahr/Monat	2017		2018		2019		2020	
	Werte	Änderung	Werte	Änderung	Werte	Änderung	Werte	Änderung
Januar	12.181,51 €	0,20 € (+0,0 %)	12.181,71 €	12.186,93 €	8.876,02 €	-0,43 € (-0,0 %)	8.876,19 €	8.875,70 €
Februar	10.609,53 €	1,49 € (+0,0 %)	10.611,02 €	10.606,33 €	9.248,82 €	-4,70 € (-0,0 %)	9.248,82 €	10.607,53 €

Energiekosten Erdgas Gesamt

Jahr/Monat	2017		2018	
	Werte	Änderung	Werte	Änderung
Januar	13.277,33 €	-0,48 € (-0,0 %)	13.276,85 €	-0,51 € (-0,0 %)
Februar	5.196,48 €	2,26 € (+0,0 %)	5.198,74 €	7.316,37 €

# WITH IoT YOU MAKE BUILDINGS AND FACILITIES INTELLIGENT

## Solutions

QBRX is an open and flexible system. We are not only concerned with technology and systems, but above all with the people who operate them.

We come from the real world and know what it looks like in reality. That's why we don't build our platform around data points. Instead, the structure of your projects is based on reality.



### MODULAR

Modular and configurable service for different areas of application



### IoT

Vendor-independent connectivity in the central IoT service desk



### CLOUD

Ready to use and accessible from anywhere in the world



### DATA ANALYTICS

Data analysis through intelligent algorithms helps to get more out of the data



### CONSULTING

Experts advise on the sensible use of data



### DEMO-ACCOUNT

Test QBRX yourself

# WHAT CAN QBRX EVERYTHING PERFORMANCE?

## Features

QBRX includes extensive analysis tools, reporting modules and allows the calculation of individual EnPIs. Ticket systems, document repositories and the possibility of remote parameterisation are also part of the functional scope.

In this way, the success of energy optimisation measures can be monitored and documented, further efficiency measures can be derived and energy management can be continuously improved. Start the workflow, keep an eye on everything and be alerted!



### PROBLEM DETECTION

Be informed about failures and malfunctions at any time



### DATA ANALYSIS

Calculate and visualise your data



### TICKET SYSTEM

Organise tasks, maintenance and repairs



### DOCUMENT MANAGEMENT

File documents on your sites, facilities and equipment



### ENERGY MONITORING

Keep an overview and optimise your consumptions



### REMOTE PARAMETER SETTING

Configure your devices and systems flexibly with QBRX



### REPORTING

Generate reports with content over periods of time that you need



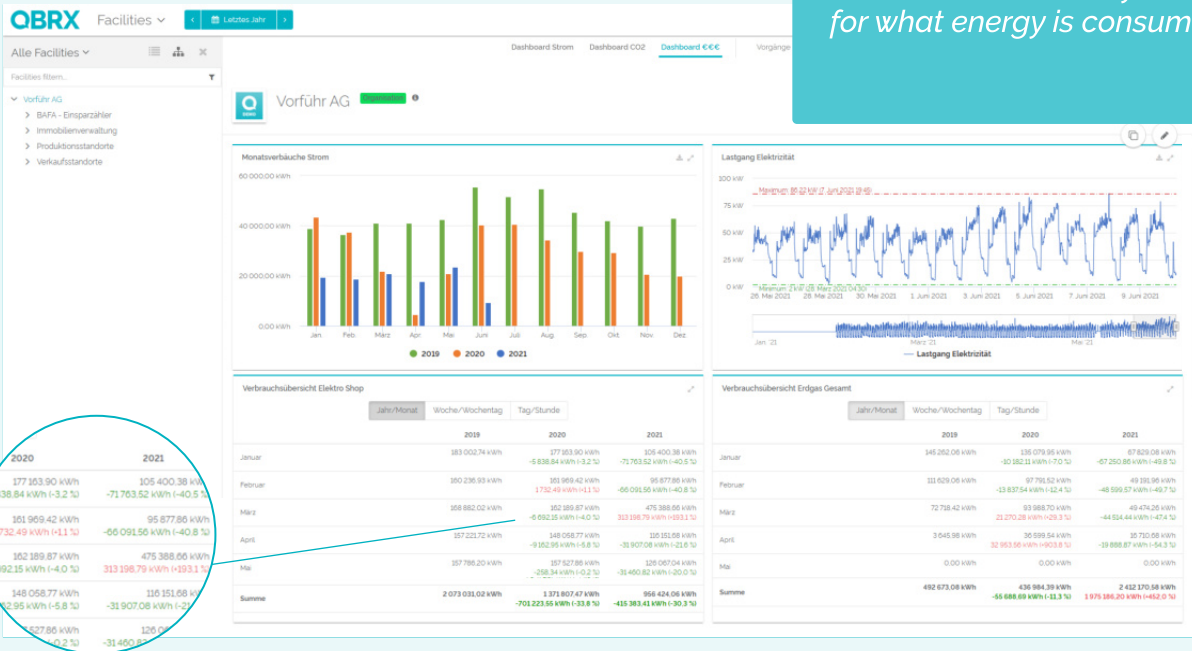
### INVENTORY

Devices and systems can also be managed without data in QBRX



# TRANSPARENCY CREATES EFFICIENCY

Energy consumption measurement that is transparent informs you about where, when, by whom and for what energy is consumed.







# ABOUT THE CREATION OF QBRX



## *"It all started with an idea - the idea of talking to buildings and facilities."*

The idea for QBRX came about through daily contact with customers. We are part of Hörburger AG, which offers comprehensive and individual IoT solutions in addition to QBRX. Whether intelligent building automation, control cabinet construction, retail facility management, energy management or machine automation. For the optimal implementation of our energy management projects, we needed a portal that would give us a good overview of all the sites we manage and at the same time support us with monitoring and maintenance, including service and a ticket system. We didn't want to settle for compromises and therefore began developing the IoT Service Desk QBRX in the summer of 2015.

As part of Hörburger AG, the QBRX team has therefore been busy for several years creating the optimal platform for the efficient setup and support of projects. This has greatly simplified the work of our project engineers and service staff. Over time, not only our platform and our team have grown, but also our wealth of experience. Since 2018, we have not only been using QBRX internally within the organisation, but also making it available to other companies as planned. So with QBRX as your IoT service desk, you can also implement your projects. Today, more than 3500 sites with 300,000 data points are registered in QBRX and you can also become a part of it.

### **TEST QBRX YOURSELF**

**Are you interested in what QBRX can do? Simply apply directly for your personal test account. Free of charge, of course.**



**If you have any questions  
please contact us.**

**phone: +49 (0) 361 44 21 477**

**e-mail: [support@qbrx.com](mailto:support@qbrx.com)**

**[www.qbrx.com](http://www.qbrx.com)**



# IMPRESSUM

**Publisher:**

Hörburger AG  
Niederlassung Erfurt  
Am Urbicher Kreuz 32 | 99099 Erfurt  
Telefon +49 (0) 361 442 14-0  
erfurt@hoerburger.de  
www.hoerburger.de  
www.qbrx.com

**Branch Manager:**

Christian Oswald, Markus Müllenberg

**Editing | Typesetting | Layout | Graphics:**

Angi Geyer

**Cover image:**

Hörburger AG

All information in the magazine is subject to typesetting and printing errors as well as subsequent changes. Reprinting and reproduction, duplication of any kind, including excerpts, only with the written permission of Hörburger AG.

**Headquarters of the company:**

Hörburger AG  
Gewerbestraße 5  
87448 Waltenhofen

**Branch offices:**

Augsburg, Chemnitz,  
Erfurt, Leonberg,  
Sura Mica (Sibiu, Rumänien)

**Chairman of the board:**

Christian Hörburger

**Board of Directors:**

Stephan Hähle, Detlef Krist, Rainer Mayer

**Supervisory Board Chairman:**

Kurt Hörburger

